



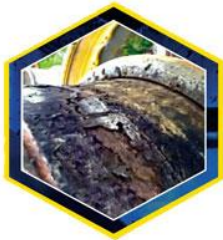
Flat tires, premature wear, and downtime costs make the cost of tires one of the most expensive parts of owning and operating equipment. With this in mind, TLC has been formulated specifically to reduce these costs by extending tire and wheel life, enabling easier wheel dismounting, and early detection of potentially dangerous cracked wheels. TLC promotes safety, reduces downtime, and extends the life of your OTR tires and rims.

No matter what the average operating ambient temperature, there is a TLC product specifically formulated to perform from lows of -40° F to +20° F (-40° C to -6° C).

Tire and Rim Protection

TLC Tire & Rim Protection extends the life of your tires and wheels. When using TLC, you can be confident that your wheels will be protected from rust and corrosion while working in the harshest conditions. Additionally, TLC's double lubricant will clean rusting rims, making it easier to remove tires from wheels therefore lowering labor costs.

TLC will also preserve your original tire liner. This product reduces your costs by keeping the tires running cooler, extending the life of the tires. **Experience the TLC Difference:**



WITHOUT TLC

Rusty wheel and components
Reduced hours on the wheel and tires
Added downtime and operating costs
Safety hazard



WITH TLC

Tires run cooler
Clean wheels reduce labor
Increased hours on the wheel and tires
Reduced downtime and operating costs

Benefits at a Glance

- Increases tire and wheel life
- Cools tire by 10-20° F
- Saves casings for recapping
- Prevents and eliminates rust and corrosion
- Contains twice the lubricant compared to similar products
- Lubricates rims for easier dismounting
- Will not block valve stems
- Designed specifically for large tires on heavy-duty equipment

NOW AVAILABLE AT GALLAGHER TIRE



www.gallaghertire.com





Recommended TLC Quantity Chart for OTR Tires*							
2 GALLONS 8 LITERS	3 GALLONS 11 LITERS	4 GALLONS 15 LITERS	5 GALLONS 19 LITERS	6 GALLONS 23 LITERS	8 GALLONS 30 LITERS	15 GALLONS 57 LITERS	30 GALLONS 114 LITERS
12.00R24	18.00R25	18.00R33	24.00R35	24.00R49	45/65R45	37.00R57	ALL 63"
13.00R24	21.00R25	21.00R35	33.5R33	37.5R39	27.00R49	42/90R57	
14.00R24	20.5R25	18.00R49	29.5R35	37.25R35	30.00R51		
16.00R24	23.5R25	21.00R49	33.25R35	35/65R33	30 R 56.5		
14.00R25	26.5R25	26.5R29		33.5R39			
16.00R25	29.5R25	29.5R29		37.5R39	10 GALLONS 38 LITERS	20 GALLONS 76 LITERS	* Volumes need to be increased by 30% when TLC is used in bias ply tires.
15.5R25	16.9R28	33.25R29		40.5R39	33.00R51	40.00R57	
17.5R25	18.4R28	23.1R26		27 R 56.5	36.00R51	46/90R57	
14.9R24	21 L R 24	24.5R32			37.5R51	48/95R57	
16.9R24					50/65R51		
17.5L R 24							
19.5L R 24							