



**TR Wheel  
Engineering**

Tires and Wheels - Design and Delivery Solutions

**2019  
AFTERMARKET  
PRODUCTS**



**INDUSTRIAL**



**POWERSPORTS LAWN & GARDEN**



**OTR WHEEL ENGINEERING, INC.** OPENED IN 1987 IN ROME, GA AS A SMALL WHEEL SHOP WITH MR. FRED TAYLOR AT ITS HELM. FOR MORE THAN 30 YEARS, WE HAVE MET WITH SUCCESS NOT ONLY IN OUR UNPRECEDENTED EXPANSION BOTH DOMESTICALLY AND WORLDWIDE BUT ALSO AS AN INNOVATOR OF TIRE AND WHEEL TECHNOLOGY.

**THE CAPABILITIES OF OUR ENGINEERING SUPPORT TEAM ARE SECOND TO NONE AS WE WORK WITH YOU, OUR CLIENTS, TO DEVELOP NEW PRODUCTS AND/OR ENHANCE EXISTING PROCESSES. WE HOLD MULTIPLE TIRE PATENTS AND OFFER MORE THAN 300 TREAD TYPES AND SIZES. MOREOVER, WITH A FULL RANGE OF MANUFACTURING CAPABILITY, WE ARE ABLE TO ROLL OUR OWN MATERIAL THUS ELIMINATING OUR DEPENDENCE ON FOREIGN SOURCES.**

**FOR YEARS, OUR BUSINESS MODEL AS A TIRE AND WHEEL INTEGRATOR HAS PROVEN SUCCESSFUL. WITH DOMESTIC AND GLOBAL PROCUREMENT CAPABILITY AND RESOURCES TO OPEN FACILITIES FOR JUST-IN-TIME DELIVERY TO OUR CUSTOMERS, WE ARE PREPARED TO MEET ALL YOUR NEEDS.**

**WITH A FOCUS ON THE CUSTOMER, OUR SOLID RELATIONSHIPS WILL SUSTAIN OUR BUSINESS FOR YEARS TO COME. WE LOOK FORWARD TO MEETING YOUR NEEDS! CALL US TODAY!**



**LAWN & GARDEN**

**04**

- 04.....CHEVRON
- 04.....CHEVRON II
- 05.....ULTRA CHEVRON
- 05.....GARDEN MASTER
- 06.....GRASSMASTER
- 07.....FAIRWAY MASTER
- 07.....GC
- 07.....HBR LAWN MASTER
- 08.....HK-45
- 08.....LAWN BOSS
- 08.....LAWN TRAC
- 09.....LITEFOOT
- 09.....FLEX RIB
- 09.....RIB
- 10.....ROUGH TAMER
- 10.....FLEX SMOOTH
- 11.....SMOOTH
- 11.....ZERO-T

**POWERSPORTS**

**12**

- 12.....22 MAG
- 12.....250 SWIFT
- 13.....350 MAG
- 13.....350 SUPER MAG
- 14.....440 MAG
- 14.....BIGFOOT
- 15.....HP-007
- 15.....PROWLER
- 16.....TOMAHAWK
- 16.....TRAIL WARRIOR
- 17.....HP-009
- 17.....WIZZARD

**INDUSTRIAL**

**18**

- 18.....G2 HYBRID
- 18.....GRADER
- 18.....HEATMASTER E7
- 19.....IND-5
- 19.....LIGHTNING FOR TELEHANDLER
- 19.....LITEFOOT
- 20.....MUDSHARK HF3

- 20.....OUTRIGGER
- 21.....OUTRIGGER HF3
- 21.....SANDMASTER
- 22.....SKS
- 22.....SANDSTORM
- 22.....STABILIZER
- 23.....TELLE
- 23.....TRACTION MASTER
- 23.....WEARMASTER
- 24.....PNEUMATIC SHAPED SOLIDS
- 24.....TOUGH ENOUGH APERTURE SOLID
- 25.....MOLD ON SOLIDS
- 26.....NON-MARKING

**WHEELS.....27**

**RUBBER TRACKS.....31**

**TELEHANDLER EXCHANGE PROGRAM.....32**

**WHEEL RECERTIFICATION PROGRAM.....33**

**FLAT PREVENTION OPTIONS.....34**

**WARRANTY.....36**

**NOTES.....39**

# LAWN & GARDEN

## CHEVRON

NON-DIRECTIONAL TIRE DESIGNED FOR STABILITY AND TRACTION. HIGH QUALITY CONSTRUCTION PROVIDES EXCELLENT DURABILITY AND WEAR RESISTANCE. AN EXCELLENT TIRE FOR A VARIETY OF SMALL EQUIPMENT APPLICATIONS.



SIZE	PR	TREAD	RIM	PSI	SW	OD	LOAD	PN
13x5.00-6	4	TURF	6x3.5	22	4.69	12.72	440@10 MPH	T5604135006
13x6.50-6	4	TURF	6x4.5	28	6.3	13.27	460@10 MPH	T5604136506
18x8.50-8	4	TURF	8x7	22	8.39	17.64	825@10 MPH	T5604188508



## CHEVRON II

A MODIFIED VERSION OF OUR POPULAR CHEVRON. ITS TURF FRIENDLY DESIGN OPTIMIZES GRIP WITH MINIMAL WEAR.

SIZE	PR	TREAD	RIM	PSI	SW	OD	LOAD	PN
15x6.00-6	4	TURF	6x4.5	30	6.26	14.65	565@10 MPH	T10104156006
16x7.50-8	4	TURF	8x5.375	24	7.05	16.57	675@10 MPH	T10104167508
18x8.50-8	4	TURF	8x7	22	8.28	17.77	825@10 MPH	T10104188508
18x9.50-8	4	TURF	8x7	24	9.25	17.91	910@10 MPH	T10104189508
20x8.00-10	4	TURF	10x6	24	7.91	20	935@10 MPH	T101042080010
20x10.00-10	4	TURF	10x7	24	7.91	20	935@10 MPH	T1010420100010

## ULTRA CHEVRON

NON-DIRECTIONAL TIRE DESIGNED FOR STABILITY AND TRACTION. HIGH QUALITY CONSTRUCTION - EXCELLENT DURABILITY AND WEAR RESISTANCE. A SUPERIOR TIRE FOR A VARIETY OF SMALL EQUIPMENT APPLICATIONS.



SIZE	PR	TREAD	RIM	PSI	SW	OD	LOAD	PN
24x13.00-12	4	TURF	12x10.5	18	12.87	22.68	1730@10 MPH	T560424130012
26.5x14.00-12	4	TURF	12x10.5	18	14.17	26.42	2170@10 MPH	T5604265140012
29x14.00-15	4	TURF						T560429140015
29x14.00-15	12	TURF	15x12	75	14.49	29.01	4210@10 MPH	T561229140015



## GARDEN MASTER

HIGH QUALITY R4 DIRECTIONAL TIRE DESIGNED FOR SMALL EQUIPMENT. THE HERRINGBONE TREAD DESIGN PROVIDES GREAT TRACTION FOR A VARIETY OF OPERATING CONDITIONS. ITS TIRE LUGS GRIP EFFECTIVELY IN SOFT PACK, SAND AND HARD PACK CONDITIONS.

SIZE	PR	TREAD	RIM	PSI	SW	OD	LOAD	PN
18x8.50-10	4	R4	10x7	22	8.25	17.76	780@10 MPH	T99041885010
26x12.00-12	4	R4	12x10.5	20	12	26	1760@10 MPH	T990426120012

# GRASSMASTER

DESIGNED WITH A HIGH TRACTION TREAD AND LONG WEAR RUBBER COMPOUND. AVAILABLE IN 2 OR 4-PLY RATING FOR MOST SIZES.



SIZE	PR	TREAD	RIM	PSI	SW	OD	LOAD	PN
15x6.00-6	2	TURF	6x4.5	14	5.98	14.17	365@10 MPH	T802156006
15x6.00-6	4	TURF	6x4.5	14	5.98	14.29	570@10 MPH	T804156006
16x6.50-8*	4	TURF	8x5.375	28	6.38	15.98	615@10 MPH	T804166508
16x7.50-8	4	TURF	8x5.375	22	7.13	16.14	760@10 MPH	T804167508
18x8.50-8	4	TURF	8x7	22	8.5	17.71	825@10 MPH	T804188508
18x8.50-10	4	TURF	10x7	22	8	17.7	780@10 MPH	T8041885010
18x9.50-8	4	TURF	8x7	24	9.11	18.33	935@10 MPH	T804189508
18x10.50-10	4	TURF	10x7	22	9.92	17.95	990@10 MPH	T80418105010
20x6.50-10	4	TURF	10x5.5	24	6.7	19.6	840@10 MPH	T8042065010
20x8.00-10	4	TURF	10x6.5	22	7.7	19.6	850@10 MPH	T8042080010
20x10.00-8	4	TURF	8x8	22	9.8	16.69	1200@10 MPH	T8042010008
20x10.00-10	4	TURF	10x7	22	9.17	19.49	1170@10 MPH	T80420100010
20x12.00-10	4	TURF	10x8.5	20	11	19.9	1320@10 MPH	T80420120010
22x11.00-10	2	TURF	10x8.5	10	11	21.1	1050@10 MPH	T80222110010
22x11.00-10*	4	TURF	10x8.5	22	10.79	21.5	1050@10 MPH	T80422110010
23x9.50-12	4	TURF	12x7	24	9.21	22.95	1375@10 MPH	T8042395012
23x10.50-12	4	TURF	12x8.5	22	10.4	22.51	1320@10 MPH	T80423105012
24x9.50-14	4	TURF	14x7	12	9.17	24.06	1375@10 MPH	T8042495014
24x12.00-12	4	TURF	12x10.5	20	11.54	24	1710@10 MPH	T80424120012
24x12.00-14	4	TURF	14x10.5	12	11.85	24.09	1820@10 MPH	T80424120014
25x12.00-12	4	TURF	12x10.5	20	12.52	25	1740@10 MPH	T80425120012
26x10.50-12	4	TURF	12x8.5	22	11.02	26.1	1590@10 MPH	T80426105012
26x12.00-12	4	TURF	12x10.5	20	12.64	25.27	1760@10 MPH	T80426120012
26x12.00-16	4	TURF	16x10.5	20	11.65	26.04	1820@10 MPH	T80426120016FP
31x15.50-15	10	TURF	15x13	60	14.96	30.98	4225@10 MPH	T801031155015

# FAIRWAY MASTER

NON-DIRECTIONAL GOLF CART TIRE. 4-PLY CONSTRUCTION. SMOOTH RIDE COMPLIMENTS OF ITS DESIGN.



SIZE	PR	TREAD	RIM	PSI	SW	OD	LOAD	PN
205/50-10	4	TURF	10x6	30	7.83	18.17	675@10 MPH	T117042055010
225/35-12	4	TURF	12x7	30	8.31	18.57	750@10 MPH	T117042253512



## GC

WIDE FOOTPRINT, STRONG SIDEWALL, AND LONG WEAR RUBBER COMPOUND PROVIDES UNMATCHED STABILITY AND DURABILITY.

SIZE	PR	TREAD	RIM	PSI	SW	OD	LOAD	PN
18x8.50-8	4	TURF	8x7	22	8.39	17.72	825@10 MPH	T5094188508

# HBR LAWN MASTER

LOW PROFILE TURF TIRE FEATURING A FLAT TREAD PROFILE TO DELIVER A WIDE FOOTPRINT TO MINIMIZE GROUND COMPACTION.



SIZE	PR	TREAD	RIM	PSI	SW	OD	LOAD	PN
22x10.00-14	4	TURF	14x8	22	9.61	22.28	1230@10 MPH	T870422100014
24x12.00-14	4	TURF	14x10.5	22	12.17	12	1820@10 MPH	T870424120014
26x12.00-16	4	TURF	16x10.5	20	12	23.94	1820@10 MPH	T870426120016

# HK-45



DESIGNED TO PERFORM ON ALL TYPES OF TERRAIN AND IN A VARIETY OF RIDING CONDITIONS. A HIGH PERFORMANCE YET DURABLE NON-DIRECTIONAL TIRE OFFERS EXCEPTIONAL STRAIGHT LINE TRACTION ALONG WITH EXCELLENT BREAKING AND CORNERING. ITS STRONG DURABLE SIDEWALLS PROVIDE GREAT PUNCTURE RESISTANCE THAT WILL KEEP YOU ON THE MOVE.

SIZE	PR	TREAD	RIM	PSI	SW	OD	LOAD	PN
18x11.00-10	4	TURF	10X8.5	22	9.5	17.72	1100@10 MPH	T24450418110010



# LAWN BOSS

EXTREMELY VERSATILE WITH A FLAT PROFILE FOR PRO, CONSUMER AND OTHER APPLICATIONS. ALL-AROUND PERFORMANCE WITH A FLAT PROFILE AND AMPLE TREAD DEPTH. CAN BE USED ON MACHINES RANGING FROM ZERO-TURN MOWERS TO UTILITY VEHICLES.

SIZE	PR	TREAD	RIM	PSI	SW	OD	LOAD	PN
18x8.50-8	4	TURF	8x7	22	8.7	18.23	825@10 MPH	T11904188508
20x12.00-10	4	TURF	10x9.5	20	11.73	20.24	1320@10 MPH	T1190420120010

# LAWN TRAC

ULTIMATE DEEP-TRACTION WITH A LARGE CONTACT AREA TO PROVIDE THE BEST TRACTION WHETHER THE SURFACE IS WET OR DRY. THE OPEN LUG DESIGN ALLOWS FOR MAXIMUM SELF-CLEANING AND SIDE HILL SLIP RESISTANCE.



SIZE	PR	TREAD	RIM	PSI	SW	OD	LOAD	PN
16x7.50-8	4	R1	8x5.375	24	7.13	16.42	710@10 MPH	T10004167508
18x8.50-8	4	R1	8x7	22	8.38	18.11	825@10 MPH	T10004188508
18x8.50-10	4	R1	10x7	22	8	17.8	780@10 MPH	T100041885010
24x12.00-12	4	R1	12x10.5	20	12.15	24	1710@10 MPH	T1000424120012
26x12.00-12	4	R1	12x10.5	20	12.28	25.98	1760@10 MPH	T1000426120012



# LITEFOOT

DESIGNED TO OPERATE IN SANDY CONDITIONS AS WELL AS PRODUCE MINIMAL TURF DAMAGE AND YET PROVIDE ENOUGH TRACTION TO GET THE JOB DONE. CONSTRUCTED WITH A LONG WEAR RUBBER COMPOUND. DESIGN IS GREAT FOR HANDLING AND PERFORMANCE FOR SMALL EQUIPMENT.



SIZE	PR	TREAD	RIM	PSI	SW	OD	LOAD	PN
22.5x10.00-8	4	TURF	8x8	22	10	22.6	1390@10 MPH	T40422510008
23x8.50-12	4	TURF	12x7	22	8.24	22.6	1100@10 MPH	T4042385012
24x12.00-12	4	TURF	12x10.5	20	12.28	23.3	1710@10 MPH	T40424120012
23x11.00-10	4	TURF	10x8.5	22	11.2	21.6	1480@10 MPH	T40423110010FP
26x12.00-12	4	TURF	12x10.5	20	12.28	25.59	1760@10 MPH	T40426120012



# FLEX RIB

IMPROVED HEAVY DUTY SEMI-PNEUMATIC FLAT PREVENTION DESIGN WITH A PNEUMATIC RIDE. "LOCKED TIRE" DESIGN PROVES TO BE A TRUE ONE-PIECE ASSEMBLY UTILIZING ENHANCED RUBBER TECHNOLOGY THAT REDUCES SHOCK AND LOWERS VIBRATION.

SIZE	PR	TREAD	RIM	PSI	SW	OD	LOAD	PN
8x2.5-4	-	RIB	4x2.5	-	2.5	8	125@5 MPH	4124192

# RIB

OFFERS AN EXCELLENT COMBINATION OF TRACTION, DURABILITY, AND LOW IMPACT.



SIZE	PR	TREAD	RIM	PSI	SW	OD	LOAD	PN
11x4.00-5	4	RIB	5x3	46	4	10.7	210@10 MPH	T1504114005
13x5.00-6	4	RIB	6x3.5	40	4.8	12.7	440@10 MPH	T1504135006
15x6.00-6	4	RIB	6x4.5	30	6.02	14.21	565@10 MPH	T1504156006
16x6.50-8	4	RIB	8x5.375	28	6.53	16.1	615@10 MPH	T6204166508
18x8.50-8	4	TURF	8x7	22	-	-	825@10MPH	T6204188508
18x9.50-8	4	RIB	8x7	24	9.41	17.44	935@10 MPH	T6204189508
20x10.00-10	4	RIB	10x8	22	9.45	19.6	1170@10 MPH	T150420100010



# ROUGH TAMER

AGGRESSIVE TREAD DESIGN FOR SUPERIOR TRACTION.

SIZE	PR	TREAD	RIM	PSI	SW	OD	LOAD	PN
4.10/3.50-4	2	STUD	4x2.25	24	3.66	10.20	225@10 MPH	T116024103504
4.80/4.00-8	4	STUD	8x2.5	42	4.65	16.61	660@10 MPH	T116044804008
16x6.50-8	2	TURF	8x5.375	14	6.56	15.87	410@10 MPH	T11602166508

# FLEX SMOOTH

IMPROVED HEAVY DUTY SEMI-PNEUMATIC FLAT PREVENTION DESIGN WITH A PNEUMATIC RIDE. "LOCKED TIRE" DESIGN PROVES TO BE A TRUE ONE-PIECE ASSEMBLY UTILIZING ENHANCED RUBBER TECHNOLOGY THAT REDUCES SHOCK AND LOWERS VIBRATION.



SIZE	PR	TREAD	RIM	PSI	SW	OD	LOAD	PN
8x1.75	-	SMOOTH	-	-	1.65	7.88	-	4124193
13x5.00-6	-	SMOOTH	6x3.25	-	4.67	12.32	460@10 MPH	4166844
13x6.50-6	-	SMOOTH	6x4.5	-	5.8	12.7	440@10 MPH	4165278
15x6.00-6	-	SMOOTH	6x4.5	-	5.83	14.17	570@10 MPH	07100930



## SMOOTH

UNIQUE SMOOTH TREAD DESIGN ALLOWS THE OPERATOR TO TURN ON A DIME WITHOUT SCALPING THE TURF. SUPERIOR SIDEWALL OFFERS PUNCTURE PROTECTION AND STABILITY.

SIZE	PR	TREAD	RIM	PSI	SW	OD	LOAD	PN
11x4.00-5	4	SMOOTH	5x3.25	48	4.02	11.02	340@10 MPH	T5504114005
13x5.00-6	4	SMOOTH	6x3.25	40	4.7	12.7	440@10 MPH	T5504135006
13x6.50-6	4	SMOOTH	6x4.5	28	6.5	12.83	460@10 MPH	T5504136506
18x9.50-8	4	SMOOTH	8x7	22	8.8	17.7	935@10 MPH	T5504189508
18x10.50-8	4	SMOOTH	8x8	22	9.88	18.58	990@10 MPH	T55041810508
18x10.50-10	4	SMOOTH	10x8.5	22	9.91	18.85	990@10 MPH	T550418105010
20x10.00-10	2	SMOOTH	10x8.5	12	9.8	19.5	815@10 MPH	T550220100010

## ZERO-T

VISUALLY STIMULATING TIRE DESIGNED WITH THE ZERO-TURN LAWN MOWER IN MIND.



SIZE	PR	TREAD	RIM	PSI	SW	OD	LOAD	PN
20x8.00-10	4	TURF	10x7	22	8.19	20.1	850@10 MPH	T133042080010FP
23x10.50-12	4	TURF	12x8.5	20	10.04	23.07	1390@10 MPH	T1330423105012
24x12.00-12	4	TURF	12x10.5	20	12.05	24.21	1710@10 MPH	T1330424120012
26x12.00-12	4	TURF	12x10.5	20	12.01	26.2	1930@10 MPH	T1330426120012

# POWER SPORTS



## 22 MAG

- ◆ **DIRECTIONAL OFF-ROAD ALL-TERRAIN TRACTION**
- ◆ **AGGRESSIVE DESIGN** BAR TREAD.
- ◆ **BUILT TO UTV STANDARD** SUPPORTING HIGHER INFLATION PRESSURES AND GREATER LOADS THAN STANDARD ATV TIRES.

SIZE	PR	TREAD	RIM	PSI	SW	OD	LOAD	PN
21x11.00-8	4	DIR	8x8.5	22	10.9	21.2	1390@10 MPH	T2404222111008
22x11.00-10	4	DIR	10x8.5	22	10.8	22	1480@10 MPH	T24042222110010
22.5x11.00-10	4	DIR	10x8.5	22	10.8	22.2	1520@10 MPH	T240422225110010

## 250 SWIFT

- ◆ **NON-DIRECTIONAL OFF-ROAD ALL-TERRAIN TRACTION**  
"SWIFT" FORWARD TRACTION AND IMPROVED HANDLING.
- ◆ **MAXIMUM TREAD CONTACT** OFFERED VIA AN UNIQUE, KNOBBY PATTERNED SQUARE PROFILE WITH STIFF SIDEWALL AND HOLLOW CENTER CLEATS DESIGN.
- ◆ **BUILT TO UTV STANDARD** SUPPORTING HIGHER INFLATION PRESSURES AND GREATER LOADS THAN STANDARD ATV TIRES.



SIZE	PR	TREAD	RIM	PSI	SW	OD	LOAD	PN
22x11.00-8	4	NON-DIR	9x8	22	11.18	21.81	1480@10 MPH	T2425042211008
22x11.00-10	4	NON-DIR	10x9	22	10.63	21.07	1480@10 MPH	T24250422110010
25x10.00-12	6	NON-DIR	12x8.5	24	10.16	25.16	1675@10 MPH	T24250625100012



# 350 MAG

- ◆ **NON-DIRECTIONAL OFF-ROAD ALL-TERRAIN PERFORMANCE**
- ◆ **UNIQUE TREAD DESIGN** PROVIDES SUPERB WEAR CHARACTERISTICS FOR INCREASED TIRE LIFE - DELIVERING A MORE RESPONSIVE TIRE WITH A SMOOTH AND COMFORTABLE RIDE.
- ◆ **BUILT TO UTV STANDARD** SUPPORTING HIGHER INFLATION PRESSURES AND GREATER LOADS THAN STANDARD ATV TIRES.

SIZE	PR	TREAD	RIM	PSI	SW	OD	LOAD	PN
16x6.50-8	4	NON-DIR	8x5.375	28	6.3	16.02	615@10 MPH	T243504166508
22x11.00-10	6	NON-DIR	10x9	34	10.83	21.89	1930@10 MPH	T24350622110010
23x10.50-12	6	NON-DIR	12x8.5	22	10.31	22.91	1320@10 MPH	T24350623105012
23x10.50-14	6	NON-DIR	14x9	36	10.39	22.83	1870@10 MPH	T24350623105014
24x9.00-12	6	NON-DIR	12x7	22	9.1	23.85	1490@10 MPH	T24350624090012
24x11.00-12	6	NON-DIR	12x8.5	22	10.43	24.33	1650@10 MPH	T24350624110012
25x8.00-12	6	NON-DIR	12x6.5	24	8	25	1380@10 MPH	T2435062580012
25x9.00-12	6	NON-DIR	12x8.5	22	8.9	24.88	1445@10 MPH	T2435062590012
25x10.00-12	6	NON-DIR	12x8.5	24	10.2	25.12	1675@10 MPH	T24350625100012

# 350 SUPER MAG

- ◆ **NON-DIRECTIONAL TREAD DESIGN**
- ◆ **UNIQUE TREAD PATTERN** OUTER TREAD PATTERN SHARED WITH OUR STAPLE 350 MAG. THE INNER PATTERN; HOWEVER, IS DESIGNED TO REDUCE ROLLING RESISTANCE AND ROAD NOISE TO MAXIMIZE RIDER COMFORT.
- ◆ **DURABLE RUBBER COMPOUND** RESISTANT TO ABRASION, PROVIDING LONGER TIRE LIFE FOR HARD SURFACE APPLICATIONS.



SIZE	PR	TREAD	RIM	PSI	SW	OD	LOAD	PN
25x9.00-12	6	NON-DIR	12X7	32	8.73	24.9	1820@10 MPH	T154062590012H
25x10.00-12	6	NON-DIR	12x8.5	32	9.97	25	1980@10 MPH	T1540625100012H & T1540625100012HTL*
25x11.00-12	6	NON-DIR	12x8.5	34	10.8	25	2270@10 MPH	T1540625110012H & T1540625110012HTL*

\*AVAILABLE WITH TYRLYNER®





# 440 MAG

- ◇ **DIRECTIONAL OFF-ROAD ALL-TERRAIN PERFORMANCE**
- ◇ **AGGRESSIVE TREAD DESIGN** DIAMOND SIDE LUGS FOR DIGGING OUT RUTS OR CONQUERING ROUGH TERRAIN.
- ◇ **SMOOTH TRAIL RIDER** SUPERB SHOCK ABSORPTION AND STABILITY.
- ◇ **BUILT TO UTV STANDARD** SUPPORTING HIGHER INFLATION PRESSURES AND GREATER LOADS THAN STANDARD ATV TIRES.

SIZE	PR	TREAD	RIM	PSI	SW	OD	LOAD	PN
16X6.50-8	4	DIR	8x5.375	28	6.14	15.98	640@10 MPH	T244404166508
24x9.00-12	6	DIR	12x8	22	8.9	23.7	1490@10 MPH	T24440624090012
24x11.00-12	6	DIR	12x8.5	22	10.43	24.33	1650@10 MPH	T24440624110012
25x8.00-12	6	DIR	12x6.5	24	8	25	1380@10 MPH	T2444062580012-TL*
25x9.00-12	4	DIR	12x8.5	22	9.05	24.88	1445@10 MPH	T2444042590012
25x10.00-12	6	DIR	12x8.5	24	10.12	25.15	1675@10 MPH	T24440625100012
25x11.00-12	6	DIR	12x8.5	24	10.83	25.12	1710@10 MPH	T24440625110012

\*AVAILABLE WITH TYRLYNER®

# BIGFOOT

- ◇ **DIRECTIONAL OFF-ROAD MUD-TERRAIN PERFORMANCE**
- ◇ **AGGRESSIVE, EXTRA DEEP TREAD DESIGN** PROVIDES EXCELLENT TRACTION ON WET AND MUDDY SURFACES.
- ◇ **OPTIMUM PROPERTIES** OF SELF-CLEANING, EXTRAORDINARY CUT, AND CHIP RESISTANCE.
- ◇ **DURABLE 6-PLY** SUPPORTING LONGER TIRE LIFE.



SIZE	PR	TREAD	RIM	PSI	SW	OD	LOAD	PN
8.3-16	6	R1	16x6	34	8.64	31.17	1330@20 MPH	T17068316
8.3-20	6	R1	20x7	34	9.49	35	1235@20 MPH	T153068320



# HP-007

- ◇ **DIRECTIONAL OFF-ROAD ALL-TERRAIN PERFORMANCE**
- ◇ **“V” ANGLED TREAD DESIGN** TO PROMOTE EXCELLENT CLEANING AND IMPROVED TRACTION.
- ◇ **SMOOTH TRAIL RIDER** ATTRIBUTED TO THE TREAD LUGS OVERLAP OF THE CENTERLINE.
- ◇ **OUTSTANDING STEERING RESPONSE** PROVIDED FROM THE DEEP WRAP AROUND SHOULDER LUGS.

SIZE	PR	TREAD	RIM	PSI	SW	OD	LOAD	PN
25x8.00-12*	4	DIR	12x6.5	24	7.99	25.59	1380@10 MPH	T2400742580012*
25x10.00-12*	4	DIR	12x8.5	22	9.53	25.27	1610@10 MPH	T24007425100012*

\*AVAILABLE WITH TYRLYNER®

# PROWLER

- ◇ **NON-DIRECTIONAL OFF-ROAD TRAIL TERRAIN**
- ◇ **CENTER TREAD ELEMENT** PROVIDES FOR LONG WEAR AND EXCELLENT LATERAL TRACTION.



SIZE	PR	TREAD	RIM	PSI	SW	OD	LOAD	PN
23x10.50-12	4	NON-DIR	12x8.5	20	10.28	22.72	1320@10 MPH	T1550423105012
23x10.50-14	4	NON-DIR	14x8	24	10.24	22.87	1480@10 MPH	T1550423105014





# TOMAHAWK

- ◇ **NON-DIRECTIONAL OFF-ROAD MUD TERRAIN**
- ◇ **STRIKING DESIGN** THANKS TO A UNIQUE AGRESSIVE TREAD AND TIRE TEXTURE.
- ◇ **SMOOTH TRAIL RIDER** DELIVERING WHERE MOST MUD TIRES FAIL - THE TRAIL.

SIZE	PR	TREAD	RIM	PSI	SW	OD	LOAD	PN
25x8.00-12	6	NON-DIR	12x6.5	34	7.99	24.70	1710@10 MPH	T120062580012
25x10.00-12	6	NON-DIR	12x8	32	9.84	24.90	1980@10 MPH	T1200625100012
27x9.00-14	6	NON-DIR	14x7	32	8.92	27.00	1980@10 MPH	T120062790014
27x11.00-14	6	NON-DIR	14x9	32	11.08	27.00	2405@10 MPH	T1200627110014
30x10.00-14	6	NON-DIR	14x7	32	10.39	30.21	2340@10 MPH	T1200630100014
30x12.00-14	6	NON-DIR	14x9	34	11.46	30.16	2830@10 MPH	T1200630120014

# TRAIL WARRIOR

- ◇ **DIRECTIONAL OFF-ROAD ULTIMATE PERFORMANCE** ON DIRT OR COMPACT SURFACE.
- ◇ **RADIAL CONSTRUCTION** FLEXIBLE SIDEWALL, LESS ROLLING RESISTANCE FOR LONGER WEAR.
- ◇ **IMPROVED TRACTION** HIGH VOID RATIO.
- ◇ **DURABLE 8-PLY RATING** FOR HIGH LOAD/TOUGH APPLICATIONS.



SIZE	PR	TREAD	RIM	PSI	SW	OD	LOAD	PN
27x9.00R14	8	DIR	14x7	42	9.09	27	2340@10 MPH	T1670827900R14P
30x10.00R15	8	DIR	15x8	44	10.00	30.1	3080@10 MPH	T16708301000R15P





# HP-009

- ◇ **DIRECTIONAL OFF-ROAD ULTIMATE PERFORMANCE** DEEP LUGS EXCEL ON LOOSE TO INTERMEDIATE TERRAIN.
- ◇ **LUG TO VOID RATIO** PROVIDES THE PERFECT BALANCE OF TRACTION, STEERING RESPONSE, AND MUD CLEANING.
- ◇ **SHOULDER LUGS** PROTECT THE TIRE SIDEWALL AND RIM.

SIZE	PR	TREAD	RIM	PSI	SW	OD	LOAD	PN
27x9.00-12	6	DIR	12x7	18	9.02	27.17	1480@10 MPH	T2400962790012-O
27x11.00-12	6	DIR	12x9	18	11.22	27.17	1740@10 MPH	T24009627110012-O

# WIZZARD



- ◇ **NON-DIRECTIONAL OFF-ROAD ALL-TERRAIN TRACTION**
- ◇ **6-PLY CONSTRUCTION** AVAILABLE IN RADIAL OR BIAS CUT.
- ◇ **SIDEWALL PROTECTION** DEEP LUGS CONTINUE OVER THE SHOULDER.

SIZE	PR	TREAD	RIM	PSI	SW	OD	LOAD	PN
26x9.00-14	6	NON-DIR	14x7	32	8.15	25.91	1870@10 MPH	T114062690014
26x9.00R14	6	NON-DIR	14x7	32	8.46	26.22	1870@10 MPH	T1140626900R14
26x11.00-14	6	NON-DIR	14x9	34	10.47	26.06	2255@10 MPH	T1140626110014
26x11.00R14	6	NON-DIR	14x9	34	10.75	26.10	2255@10 MPH	T11406261100R14



# INDUSTRIAL

## G2 HYBRID



DESIGNED WITH A UNIQUE TREAD FOR GREAT TRACTION AND ROLLING RESISTANCE.

SIZE	PR	TREAD	RIM	PSI	SW	OD	LOAD	PN
13.00-28	12	G2 MODIFIED	28x10	65	13.39	49.09	12,300@5 MPH	T16112130028



## GRADER

DIRECTIONAL HERRINGBONE G2 OR L2 TREAD DESIGN PROVIDES EXCELLENT STABILITY AND TRACTION.

SIZE	PR	TREAD	RIM	PSI	SW	OD	LOAD	PN
13.00-28	12	G2 L2	28x10	62	13.62	50.39	7150@25 MPH 14,300@5 MPH	T11812130028
14.00-28	12	G2 L2	28x10	62	13.92	52.21	8250@25 MPH 16,100@5 MPH	T11812140028

## HEATMASTER E7

DESIGNED WITH SPECIALLY FORMULATED COMPOUNDS THAT PROVIDE MAXIMUM PERFORMANCE AND TREAD LIFE IN THE MOST SEVERE HIGH HEAT PAVING APPLICATIONS.



SIZE	PR	TREAD	RIM	PSI	SW	OD	LOAD	PN
18.00-25	16	E7	25x13	40	20.1	60.5	22,000@5 MPH	T616180025
18.00-25	28	E7	25x13	94	19.53	58.62	30,000@5 MPH	T628180025
21.00-25	28	E7	25x15	83	24.72	65.12	36,400@5 MPH	T628210025

# IND-5



PREMIUM QUALITY DEEP NON-DIRECTIONAL TREAD DESIGN. LARGE LUGS PROVIDE FOR EXCELLENT TRACTION AND SURFACE CONTACT. OFFERS A REINFORCED SIDEWALL AND RIM GUARD. ENLARGED BEAD ALLOWS FOR INCREASED STABILITY IN HEAVY SERVICE. 12LL610 HBR DESIGN ELIMINATES HUB CLEARANCE ISSUES.

SIZE	PR	TREAD	RIM	PSI	SW	OD	LOAD	PN
12.00-20	24	IND	20x8	140	13.2	46.2	LW - 18145@15MPH, SW - 15335@15 MPH	T9824120020*

\*AVAILABLE WITH TYRLYNER®



# LIGHTNING FOR TELEHANDLER

KEEPS PACE WITH INDUSTRY INNOVATION AND TECHNOLOGY - UP TO TWENTY PERCENT LARGER FOOTPRINT THAN THE COMPETITION. EXCEPTIONAL WEAR AND INCREASED FLOTATION.

SIZE	PR	TREAD	RIM	PSI	SW	OD	LOAD	PN
370/75-28	14	NON-DIR	28x11	76	14.6	50.7	12,000@5 MPH	T20143707528
400/75-28	16	NON-DIR	28x12	76	15.7	51.8	14,300@5 MPH	T20164007528

# LITEFOOT

DESIGNED TO OPERATE IN SANDY CONDITIONS AS WELL AS PRODUCE MINIMAL TURF DAMAGE AND YET PROVIDE ENOUGH TRACTION TO GET THE JOB DONE. IT IS CONSTRUCTED WITH A LONG WEAR RUBBER COMPOUND. IT'S DESIGN IS GREAT FOR HANDLING AND PERFORMANCE FOR SMALL EQUIPMENT.



SIZE	PR	TREAD	RIM	PSI	SW	OD	LOAD	PN
26x12D380	8	TURF	15x10	20	20	20	3220@5 MPH	DKNBC
33x16LL-500	10	TURF	19.5x14	20	20	20	10300 STATIC	DKNCA



# MUDSHARK HF3

HEAVY DUTY HIGH PERFORMANCE H3 TREAD DESIGN. HIGH BEAD RATIO (HBR) OPTION AVAILABLE - SHORTENED SIDEWALL WHILE MAINTAINING A STANDARD TIRE OVERALL DIAMETER (OD).



SIZE	PR	TREAD	RIM	PSI	SW	OD	LOAD	PN
31x15.50-15	10	HF3	15x13	60	4.87	31.18	4225@10 MPH	T5103115515M

\*AVAILABLE WITH TYRLYNER®: ADD -DSTL TO THE PART NUMBER



# OUTRIGGER®

OUR FLAGSHIP TIRE - EXCELLENT DESIGN WITH A 23-YEAR HISTORY OF SUPERIOR PERFORMANCE.

OUTRIGGER® IS A REGISTERED TRADEMARK.

SIZE	PR	TREAD	RIM	PSI	SW	OD	LOAD	PN
10-16.5	10	R4	16.5x8.25	75	10.94	31.06	4,710@5 MPH	T51010165
12-16.5	12	R4	16.5x9.75	80	12.35	33	6,320@5 MPH	T51212165
14-17.5	14	R4	17.5x10.5	75	13.7	35.97	8,540@5 MPH	T51414175
15-625	16	R4	CALL FOR MORE INFORMATION				12,300@5 MPH	T51615625
445/65D22.5	18	R4	22.5x13	115	17.52	46.5	16,100@5 MPH	T518445225
18-625	16	R4	CALL FOR MORE INFORMATION				15,200@5 MPH	T51618625
33x15.50-16.5	14	R4	16.5x12	80	15.75	34.65	8,090@5 MPH	T5143315165
IN315/55D20	12	R4	CALL FOR MORE INFORMATION				6,320@10 MPH	T51231520
IN355/55D625	14	R4	CALL FOR MORE INFORMATION				7,600@10 MPH	T514355625
IN385/65D19.5	16	R4	CALL FOR MORE INFORMATION				10,880@5 MPH	T516385195
IN385/65D22.5	16	R4	CALL FOR MORE INFORMATION				12,300@5 MPH	T516385225
IN445/50D710	18	R4	CALL FOR MORE INFORMATION				16,100@5 MPH	T518445710
IN445/55D19.5	16	R4	19.5x13	85	17.55	41.2	13,200@5 MPH	T516445195
IN445/55D22.5	18	R4	22.5x13	100	16.25	46.38	16,100@5 MPH	T518445225

# OUTRIGGER® HF3

PREMIUM QUALITY DIRECTIONAL TIRE DESIGNED WITH STIFF SIDEWALLS, FLAT CONTACT SURFACE, WIDE SHOULDERS AND A DURABLE RUBBER COMPOUND THAT PROVIDES LONGER LIFE WHILE OPERATING ON SOFT PACK, SAND, GRAVEL, ASPHALT, AND CONCRETE.

OUTRIGGER® IS A REGISTERED TRADEMARK.



SIZE	PR	TREAD	RIM	PSI	SW	OD	LOAD	PN
26x12D380	8	HF3	CALL FOR INFORMATION				3040@5 MPH	T5082612380



# SANDMASTER

DESIGNED TO PROVIDE EXCELLENT FLOTATION, STABILITY, AND TRACTION FOR OPERATION ON SOFT TURF AND SAND. WIDE TREAD FOR ADDED STABILITY IN A UNIQUE NON-DIRECTIONAL TREAD PATTERN. HEAVY SIDEWALL WITH RIM GUARD TECHNOLOGY.

SIZE	PR	TREAD	RIM	PSI	SW	OD	LOAD	PN
18-625	16	TURF	24.5x15	100	17	40	15,200@5 MPH	DKWP5

# SANDMASTER

EXCELLENT FLOTATION. APPLICABLE TERRAIN: TURF OR SAND



SIZE	PR	TREAD	RIM	PSI	SW	OD	LOAD	PN
36x18LL625	14	TURF	625x15	75	17.91	36.30	14,300@5 MPH	T11143618625
41x18LL22.5	14	TURF	22.5x14	50	19.71	42.24	9,000@10 MPH	T11144118225



# SKS

PREMIUM QUALITY DIRECTIONAL HERRINGBONE TREAD DESIGN.



SIZE	PR	TREAD	RIM	PSI	SW	OD	LOAD	PN
10-16.5	10	DIR	16.5x8.25	75	10.56	30.53	4710@5 MPH	T891010165
12-16.5	12	DIR	16.5x9.75	80	11.89	32.69	6320@5 MPH	T891212165



# SANDSTORM

DESIGNED FOR EXCELLENT WEAR ON HARD SURFACES WHILE RETAINING GREAT TRACTION AND FLOTATION IN 3-WHEEL FORKLIFT APPLICATIONS.

SIZE	PR	TREAD	RIM	PSI	SW	OD	LOAD	PN
31x15.50-15	8	IND	15x13	55	15	30.5	3080@5 MPH	T1420831155015-TL

# STABILIZER®

PREMIUM QUALITY SELF-CLEANING DIRECTIONAL R4 DESIGN WITH WIDE LUGS TO PROVIDE MAXIMUM SURFACE CONTACT. DESIGN OUTPERFORMS THE COMPETITION IN MUD, SAND, AND GRAVEL APPLICATIONS.

STABILIZER® IS A REGISTERED TRADEMARK.



SIZE	PR	TREAD	RIM	PSI	SW	OD	LOAD	PN
39x15LL22.5	14	R4	22.5x13	105	14.76	38.2	14,385@5 MPH	T5143915225

# TELLE



DIRECTIONAL OPEN TREAD DESIGN WITH SELF-CLEANING PROPERTIES AND EXCELLENT TRACTION. THE G2 LUG DESIGN GUARDS AGAINST PUNCTURES WHILE THE RIM GUARD REDUCES WHEEL DAMAGE.

SIZE	PR	TREAD	RIM	PSI	SW	OD	LOAD	PN
13.00-24	12	G2 L2	24x9	44 65	13.99	48.9	6,000@25 MPH 12,300@5 MPH	T3512130024P
14.00-24	12	G2 L2	24x9	36 62	14.96	51.6	6,800@25 MPH 13,900@5 MPH	T3512140024P



# TRACTION MASTER

DESIGN FEATURES THREE DEEP SELF-CLEANING STEP LUGS THAT PROVIDE EXCELLENT TRACTION IN SOFT PACK APPLICATIONS. THE EXTRA FLAT LUGS PROVIDE LONG TREAD LIFE WHILE THE RIM GUARD AND EXTRA SHOULDER WIDTH PROVIDE FOR IMPACT PROTECTION AND RESISTANCE TO CUTS AND PUNCTURES.

SIZE	PR	TREAD	RIM	PSI	SW	OD	LOAD	PN
23x8.50-12	6	R4	12x7	50	8.27	22.76	1,810@5 MPH	T5062385012

# WEARMASTER®

SUPERIOR DESIGN AND PERFORMANCE - EXCELLENT TIRE DESIGN FOR A VARIETY OF APPLICATIONS - INCLUDING MILITARY.

WEARMASTER® IS A REGISTERED TRADEMARK.



SIZE	PR	TREAD	RIM	PSI	SW	OD	LOAD	PN
10-16.5	10	NON-DIR	16.5x8.25	75	10.5	31.5	4,710@5 MPH	T21010165
12-16.5	12	NON-DIR	16.5x9.75	80	12.38	32.38	6,320@5 MPH	T21212165

# PNEUMATIC SHAPED SOLIDS

PREMIUM QUALITY TIRE(S) WITH SIDEWALL APERTURES THAT REDUCE TIRE WEIGHT, RUNS COOLER, AND RIDES SMOOTHER. PROVIDES STABILITY AND ENDURANCE AT MAXIMUM LOAD CARRYING CAPACITY AND MAINTAINS THE SAFETY OF EQUIPMENT OPERATORS DURING EXTENDED LIFTS. LOW CENTER OF GRAVITY AND MINIMAL ROLLING RESISTANCE TO MAXIMIZE FUEL EFFICIENCY WHILE OFFERING OUTSTANDING ABRASION, CUT RESISTANCE, AND TEAR STRENGTH.



SIZE	PR	TREAD	RIM	PSI	SW	OD	LOAD	PN
13.00-24	-	L3	24x8.5	-	14.5	49.7	14,300@5 MPH	TS130024E3
		G2			12.59	50	14,960@5 MPH	TS130024PZ
14.00-24	-	G2	24X10	-	13.77	52.75	17,600@5 MPH	TS140024PZ
355L28	-	L3	24x8.5	-	12.79	49.52	8,250@25 MPH	TS355L28E3
		G2			12.79	49.52	16,500 MPH	TS355L28

# TOUGH ENOUGH APERTURE SOLID

UNIQUE APERTURE DESIGN FOR EXCEPTIONAL RIDE COMFORT. TREAD COMPOUND DESIGNED FOR LONG LASTING WEAR PERFORMANCE FOR DEMANDING APPLICATIONS.



SIZE	PR	TREAD	RIM	PSI	SW	OD	LOAD	PN
31x10.00-20	-	R4	20x7.5	-	9.4	30.8	8,050@5 MPH	311020BOBLH/RH
33x12.00-20	-	R4	20x7.5	-	11.4	32.9	10,380@5 MPH	331220BOBLH/RH



# MOLD ON SOLIDS

NON-DIRECTIONAL TREAD SOLID TIRE/  
WHEEL ASSEMBLIES DESIGNED WITH  
MOLDED ON NON-MARKING RUBBER.



SIZE	PR	TREAD	RIM	PSI	SW	OD	LOAD	PN
10x3	-	MOLD ON	-	-	3	10	1,940@5 MPH	57998AWP
12x4	-	MOLD ON	-	-	4	12.2	1,500@5 MPH	108020
12x4	-	MOLD ON	-	-	4	12.2	1,500@5 MPH	108022 (with brake)
12x4.5	-	MOLD ON	-	-	4.5	12	2,134@6 MPH	105122AWP
12.7x4	-	MOLD ON	-	-	36.66	12.71	3,026@5 MPH	100100840
15x5	-	MOLD ON	-	-	5	15	2,850@6 MPH	96252AWP
16x5	-	MOLD ON	-	-	5	15.83	2,500@5 MPH	132284 (with brake)
16x5	-	MOLD ON	-	-	5	15.83	2,500@5 MPH	132285
16x5	-	MOLD ON	-	-	4.76	15.98	4,433@5 MPH	100100894
22x7	-	MOLD ON	-	-	7	22	5,500@5 MPH	94908AWP
22x7	-	MOLD ON	-	-	7	22	5,500@5 MPH	94909AWP
25.6x7	-	MOLD ON	-	-	7.13	25.59		110877

## NON-MARKING TIRES



TIRE NAME	SIZE	PR	TREAD	RIM	PSII	SW	OD	LOAD	PN
ELECTRO	36x14LL22.5	14	R4	22.5x11.75	90	13.39	36.10	9,480@5 MPH	T5143614225NM
LIGHTNING	IN240/55D17.5	12	NON-DIR	17.5x6.75	100	8.5	28.43	4,540@5 MPH	T412240175SNM
LIGHTNING TELEHANDLER	370/75-28	16	NON-DIR	28x11	73	14.41	50.47	12,000@5 MPH	T20163707528NM
LIGHTNING TELEHANDLER	400/75-28	14	NON-DIR	28x12	76	15.16	51.91	14,300@5 MPH	T20144007528NM
LITEFOOT	26x12D460	10	TURF	18x10	70	11.54	25.91	5,520@5 MPH	TR4102612460NM
LITEFOOT	33x12D610	12	TURF	24x10	80	11.65	32.99	5,360@5 MPH	TR4123312610NM
OUTRIGGER	10-16.5	10	R4	16.5x8.25	75	10.94	31.10	4,710@5 MPH	T51010165NM
OUTRIGGER	12-16.5	12	R4	16.5x9.75	80	12.35	33.25	6,320@5 MPH	T51212165NM
OUTRIGGER	26x12D380	8	HF3	15x10	42	12.12	26	3,220@5 MPH	T5082612380NM
OUTRIGGER	IN385/65D19.5	16	R4	1.5x11.75	100	15.63	39.13	10,880@10 MPH	T516385195NM
WEARMASTER SPECIAL	9-14.5	12	NON-DIR	14.5x7	105	9.64	28.57	3,230@5 MPH	T212900145NM

# 1 ONE PIECE STEEL WHEELS

**ONE PIECE DESIGN FOR EQUIPMENT FIT INCLUDING:**

- SKID STEER LOADERS
- SMALL WHEEL LOADERS
- BACKHOES
- SMALL CONSTRUCTION EQUIPMENT
- AERIAL WORK PLATFORMS
- COMPACT TRACTORS
- LAWN AND GARDEN EQUIPMENT
- UTILITY EQUIPMENT
- RECREATIONAL AND ATV EQUIPMENT
- TELEHANDLER EQUIPMENT
- HUB WHEELS WITH BEARINGS
- KEYED HUB DRIVE WHEELS
- SPROCKETED HUB DRIVE WHEELS
- AND MANY MORE



BACKHOE AND SKID STEER WHEELS		
WHEEL PN	DESCRIPTION	FITMENT
041878500494	16.5x8.25 SKID STEER	BOBCAT, CASE, JOHN DEERE, NEW HOLLAND, AND THOMAS EQUIPMENT
041907500494	16.5x9.75 SKID STEER	BOBCAT
051786800537	16x9.75 SKID STEER	CASE AND MUSTANG
F042083200937	16.5x9.75 BACKHOE	CASE
F10882200937	16.5X8.25 SKID STEER	CASE, MUSTANG, NEW HOLLAND, AND THOMAS EQUIPMENT
F10885200494	16.5x9.75 BACKHOE	CASE 480, 580 and 580SK   CASE PN D126930
586351	19.5x11.75	MANITOU

TELEHANDLER WHEELS		
WHEEL PN	DESCRIPTION	FITMENT
804443	25x12-8	MANITOU
804458	24x15-8	MANITOU
7301054	24x9-10	JLG, GENIE, TEREX, LULL, AND SKYTRAK
7301055	24x9-8	JLG, GENIE, TEREX, LULL, CATERPILLAR, AND SKYTRAK
7301056	25x13-10	JLG, GENIE, TEREX, LULL, AND SKYTRAK
515051799	24x9	JLG, GENIE, TEREX, LULL, AND SKYTRAK
9147-3206	24x9-10	JLG, GENIE, TEREX, GRADALL, AND CATERPILLAR



## **TWO PIECE STEEL WHEELS**

# 2

**TWO PIECE DESIGN FOR EQUIPMENT FIT INCLUDING:**

- MILITARY TRUCKS AND TRAILERS
- INDUSTRIAL EQUIPMENT
- DEMOUNTABLE RIMS AND COMPONENTS FOR HEAVY TRUCKS
- BOLT TOGETHER STYLES FOR UTILITY VEHICLES AND GROUND SUPPORT EQUIPMENT



## **ONE AND TWO PIECE ALUMINUM WHEELS**

# 1&2

**ONE AND TWO PIECE DESIGN FOR EQUIPMENT FIT INCLUDING:**

- CRANES

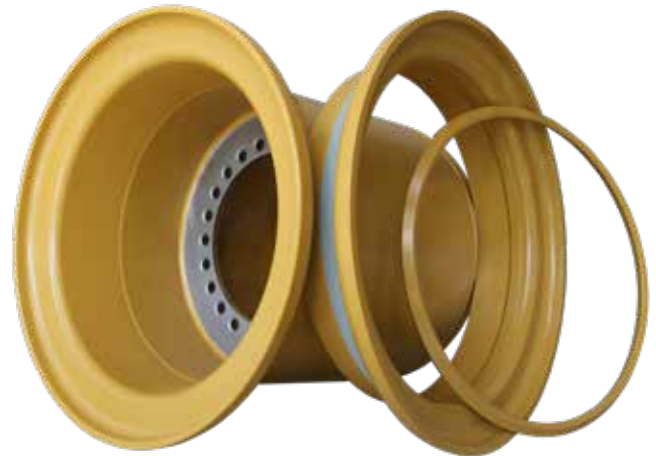
## **THREE AND FOUR PIECE STEEL WHEELS**

# 3&4

**THREE AND FOUR PIECE DESIGN FOR EQUIPMENT FIT INCLUDING:**

- CONSTRUCTION EQUIPMENT
- WHEEL LOADERS AND GRADERS
- TELEHANDLERS
- ARTICULATED HAULERS
- MILITARY TRUCKS AND TRAILERS
- SURFACE AND UNDERGROUND MINING EQUIPMENT

**SIZES FROM 15" TO 32" WHEELS**



# FIVE PIECE STEEL WHEELS

## FIVE PIECE DESIGN FOR EQUIPMENT FIT INCLUDING:

- RIGID FRAME HAUL TRUCKS
- ARTICULATED HAULERS
- WHEEL LOADERS
- RUBBER TIRED DOZERS

## SIZES FROM 25" TO 63" WHEELS



## QUICK CHANGE WHEELS FOR LARGE MINING TRUCKS

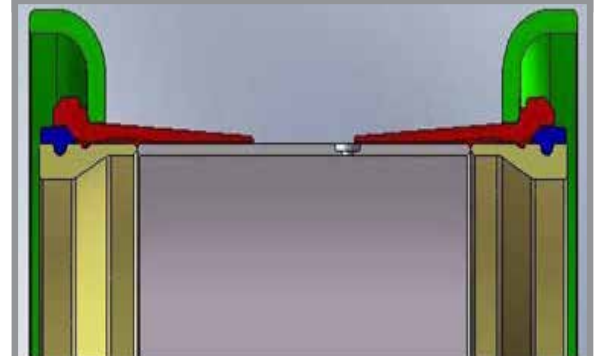
OTR WHEEL ENGINEERING OFFERS ITS GLOBAL FULLY MACHINED (GFM) VERTICAL MOUNTED QUICK CHANGE DESIGN WHEELS FOR OPERATORS OF LARGE MINE AND QUARRY TRUCKS.

### DOUBLE GUTTER STANDARD PROFILE DESIGN

- REMOVE OUTSIDE DUAL TIRES WITHOUT DEMOUNTING THE OUTSIDE DUAL RIM/WHEEL FROM THE VEHICLE
- ELIMINATES REMOVAL OF NUTS/BOLTS AND CLEATS FROM OUTSIDE DUAL POSITIONS WHEN REMOVING THE INSIDE TIRE

MANUFACTURED FROM FORGED AND FULLY MACHINED SECTIONS

- HSLA STEEL



## **COMMON CONSTRUCTION AND MINING WHEELS**

<b>WHEEL PN</b>	<b>DESCRIPTION</b>	<b>NOTE</b>
2522009	25x22 WHL BASE - HTN BASE - CAT 980B	WHEEL BASE ONLY
90187	25x22 WHL BASE - HTM BASE - CAT 980C	WHEEL BASE ONLY
2522056	25x22 WHL ASSY - HTM BASE - CAT 980C	INCLDS. 2 FLANGES, BEAD SEAT BAND, LOCK RING
2525980B	25x25 WHL BASE - HTN BASE - CAT 980B	WHEEL BASE ONLY
2525027	25x25 WHL BASE - W/O VALVE BALLAST - CAT 980C, D, E, & F	WHEEL BASE ONLY
2525028	25x25 WHL ASSY - W/O VALVE BALLAST - CAT 980C, D, E, & F	INCLDS. 2 FLANGES, BEAD SEAT BAND, LOCK RING
2525004	25x25 WHL BASE - CAT 980G	WHEEL BASE ONLY
2525029	25x25 WHL BASE - CAT 980G	WHEEL BASE ONLY
90042	33x13 WHL BASE - CAT 769	WHEEL BASE ONLY
9004295-464	33x13 WHL ASSY - CAT 769	INCLDS. 2 FLANGES, BEAD SEAT BAND, LOCK RING
90937	33x27 WHL BASE - 988G/H	WHEEL BASE ONLY
9093795	33x27 WHL ASSY - 988G/H	INCLDS. 2 FLANGES, BEAD SEAT BAND, LOCK RING
3328007	33x28 WHL BASE - 988B	WHEEL BASE ONLY
3328008	33x28 WHL ASSY - 988B	INCLDS. 2 FLANGES, BEAD SEAT BAND, LOCK RING
90197	35x15 WHL BASE - CAT 773	WHEEL BASE ONLY
90197-95	35x15 WHL ASSY - CAT 773	INCLDS. 2 FLANGES, BEAD SEAT BAND, LOCK RING
90139	35x17 WHL BASE - CAT 773	WHEEL BASE ONLY
90139-95-464	35x17 WHL ASSY - CAT 773	INCLDS. 2 FLANGES, BEAD SEAT BAND, LOCK RING
30320A	45x36 WHL BASE - CAT 992B, C	WHEEL BASE ONLY
90177	45x36 WHL BASE - CAT 992D	WHEEL BASE ONLY
514992299	45x36 WHL BASE - CAT 992G, K	WHEEL BASE ONLY
514992299-992	45x36 WHL ASSY - CAT 992G, K	INCLDS. 2 FLANGES, BEAD SEAT BAND, LOCK RING
90103	49x19.5 WHL BASE - 9.62 OFFSET - CAT 777	WHEEL BASE ONLY
90103-95	49x19.5 WHL ASSY - 9.62 OFFSET - CAT 777	INCLDS. 2 FLANGES, BEAD SEAT BAND, LOCK RING
5122002	51x22-4.5	TIRE SIZE 30.00-51
40364-95	51x24-5.0	TIRE SIZE 33.00-51
90574	51x26 WHL BASE - CAT 785	WHEEL BASE ONLY
9057495	51x26 WHL ASSY - CAT 785	INCLDS. 2 FLANGES, BEAD SEAT BAND, LOCK RING
40360-89	51x26 WHL BASE - CAT 789	WHEEL BASE ONLY
40360-95	51x26 WHL ASSY - CAT 789	INCLDS. 2 FLANGES, BEAD SEAT BAND, LOCK RING
90315	57x29 WHL BASE - CAT 789	WHEEL BASE ONLY
90315-95	57x29 WHL ASSY - CAT 789	INCLDS. 2 FLANGES, BEAD SEAT BAND, LOCK RING
90369	57x29 WHL BASE - CAT 793	WHEEL BASE ONLY
90369-95	57x29 WHL ASSY - CAT 793	INCLDS. 2 FLANGES, BEAD SEAT BAND, LOCK RING
WW634150501	63x41 WHL ASSY - CAT 795	



**OUR OBJECTIVE** IS TO DELIVER PREMIUM QUALITY RUBBER TRACKS AT THE LOWEST POSSIBLE PRICE.

**OUR REPLACEMENT TRACKS ARE:**

**GUARANTEED TO LAST -**

ADVANCED CONSTRUCTION IS GUARANTEED TO RESIST THE MOST DIFFICULT PUNISHMENT YOUR OPERATORS CAN DISH OUT.

**GUARANTEED TO FIT -**

WE MAKE CERTAIN THAT OUR REPLACEMENT TRACKS WILL MATCH YOUR EQUIPMENT JUST LIKE YOUR ORIGINAL OEM TRACKS.

**OTR WHEEL ENGINEERING** OFFERS REPLACEMENT RUBBER TRACKS FOR ALMOST EVERY MAKE OF COMPACT TRACK LOADER AND MINI-EXCAVATOR ON THE MARKET.

***OUR SPECIALLY ENGINEERED REPLACEMENT TRACKS WILL SAVE YOU MONEY!***

- |                     |                        |
|---------------------|------------------------|
| <b>BOBCAT®</b>      | <b>KOBELCO®</b>        |
| <b>CASE®</b>        | <b>KOMATSU®</b>        |
| <b>CATERPILLAR®</b> | <b>KUBOTA®</b>         |
| <b>DITCH WITCH®</b> | <b>MUSTANG®</b>        |
| <b>GEHL®</b>        | <b>TAKEUCHI®</b>       |
| <b>HITACHI®</b>     | <b>YANMAR®</b>         |
| <b>JOHN DEERE®</b>  | <b>&amp; MANY MORE</b> |

WHEN IT COMES TIME TO REPLACE YOUR RUBBER TRACKS ON YOUR COMPACT TRACK LOADERS, MINI EXCAVATORS OR ANY OTHER EQUIPMENT, DO WHAT THOUSANDS OF SATISFIED CUSTOMERS HAVE DONE - REPLACE THEM WITH OTR WHEEL ENGINEERING REPLACEMENT RUBBER TRACKS.

OTR RUBBER TRACKS ARE MADE TO EXCEED QUALITY AND PERFORMANCE STANDARDS DEMANDED BY THE ORIGINAL EQUIPMENT MANUFACTURER (OEM) - AT A LOWER COST THAN AN EQUIPMENT DEALER CAN PROVIDE THE OEM REPLACEMENT.

**CONTACT US TODAY FOR REPLACEMENT RUBBER TRACKS!!!**

**ASV POSI-TRACK & CATERPILLAR® MULTI-TERRAIN** RUBBER TRACKS ARE AVAILABLE IN AFTERMARKET PRODUCTION. THE BAR TREAD PATTERN OFFERS SUPREME TRACTION AND A LIGHTWEIGHT SOLUTION WITH THE STRENGTH OF POLYESTER CABLES FOR IMPROVED FLEXIBILITY. DESIGNED FOR THE TOUGHEST APPLICATIONS.

**HIGH TENSILE BODY** MINIMIZES STRETCHING AND IMPROVES OVERALL EQUIPMENT PERFORMANCE.

**RIGID CROSS STRUCTURE** - INCREASED LATERAL RIGIDITY IMPROVES WEIGHT DISTRIBUTION AND PROVIDES ENHANCED TRACTION AND REDUCED TRACK WEAR.

**TEAR RESISTANT DRIVE LUGS** ARE MADE OF HIGH STRENGTH LUG COMPOUND TO PREVENT LUG SEPARATION

**EXCELLENT TRACTION IN SNOW** - THE UNIQUE TREAD PATTERN PROVIDES UNSURPASSED TRACTION FOR YOUR MACHINE IN MUD AS WELL AS SNOW

**® IS A REGISTERED TRADEMARK FOR EACH COMPANY SO DESIGNATED.**



# TELEHANDLER EXCHANGE PROGRAM

**NEW TIRES MOUNTED ON REFURBISHED WHEELS, FOAM FILLED AND READY TO MOUNT ON YOUR MACHINE.**

**APPLICABLE TIRE SIZES:**

12-16.5; 13.00-24; 14.00-24; 15.5-25; 17.5-25;  
370/75-28 AND 400/75-28

***YOU BENEFIT FROM MINIMAL DOWNTIME AND COST SAVINGS.***

**ASSEMBLY SWAP:** THE PROGRAM ALLOWS CUSTOMERS TO PURCHASE REPLACEMENT ASSEMBLIES FOR EQUIPMENT AT A DISCOUNTED RATE PROVIDED THE SWAP ASSEMBLIES ARE RETURNED TO OTR.

- SWAP ASSEMBLIES NEED TO BE RETURNED WITHIN 2 WEEKS OF ORDER SHIPPED.
- ALL SWAP WHEELS ARE INSPECTED TO ENSURE WORKING CONDITION. IF UNUSABLE, OTR WILL BILL THE CUSTOMER FOR NEW WHEELS.



THE TELEHANDLER EXCHANGE PROGRAM OPERATES FROM SELECTED OTR WHEEL ENGINEERING LOCATIONS THROUGHOUT THE U.S.

CONTACT YOUR OTR SALES REPRESENTATIVE TO LEARN MORE ABOUT OUR CURRENT FREIGHT POLICY.

**BEFORE**




**AFTER**



TELEHANDLER (SWAP ASSEMBLIES)		
PART NUMBER	HOLES	MODEL
<b>24x9</b>		
7301055	8	SkTrak, Lull
9147-3206	10	JLG
2409039	5	JCB
7301054	10	SkyTrak, Lull
515059499	10	GEHL
14513-000	10	Xtreme, Ahern
<b>25x13</b>		
7301056	10	JLG, SkyTrak, Lull



# OTR Wheel Engineering

Tires and Wheels - Design and Delivery Solutions



**KEEPING  
OUR  
CUSTOMERS  
ROLLING  
SAFELY**

**YOUR PARTNERS IN  
WHEEL SAFETY  
DON'T JUST REPAIR,  
RECERTIFY**

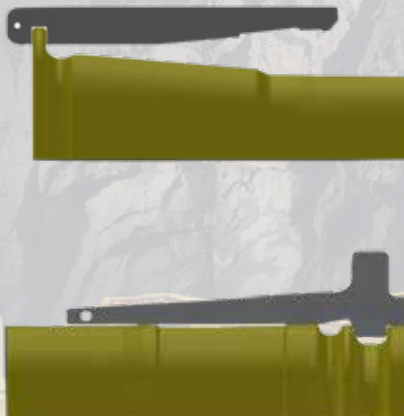
**OTR Wheel Engineering works with many of the largest mining companies in North America to ensure wheel safety.**

**We have developed a unique wheel recertification program designed to track the maintenance and history of your wheels.**

**OTR is a fully certified wheel mfg, repair and recertification facility.**

## WE CAN OFFER —

- WHEEL INSPECTION TRAINING: on-site
- WHEEL INSPECTION KITS: Unique Go, No-Go gauges developed by OTR Canada to measure wear on critical wheel and rim areas.
- WHEEL TRACKING: Through our database we will track the maintenance and history of your wheels.
- REPORTS: OTR provides detailed inspection reports on all wheel inspections and repairs.
- WHEEL REPAIRS: Complete wheel inspection, recertification and replacement of wheel centers, gutters & back sections.
- REPLACEMENT PARTS: We maintain a large inventory of replacement wheels, lock rings, flanges & beadseats to serve your requirements.
- SUPPORT: We offer Engineering, Technical Support and over 30 years experience in the wheel business.



**PROPER WHEEL INSPECTION AND MAINTENANCE IS AN ESSENTIAL PART OF KEEPING YOUR EQUIPMENT RUNNING SAFELY WHILE MINIMIZING DOWNTIME.**



## FLAT PREVENTION OPTIONS FOR PNEUMATIC TIRES

### THE WHY AND HOW TO PREVENT FLATS

TO PREVENT FLAT TIRES, MANY FLAT PREVENTION METHODS HAVE BEEN INVENTED.

EACH INNOVATION FOR FLAT PREVENTION COMES WITH A TRADE-OFF OR PERFORMANCE COMPROMISE AS WELL AS FINANCIAL CONSIDERATIONS.

LOOK TO THE PROFESSIONALS AT OTR TO HELP YOU SELECT THE BEST FLAT PREVENTION SOLUTION FOR YOUR PARTICULAR TIRE USE.



OFF-THE-ROAD TIRES OPERATE IN A VARIETY OF CHALLENGING ENVIRONMENTS. THEY MUST PROVIDE TRACTION, WEAR, AND HANDLING WHILE SIMULTANEOUSLY PROVIDING REDUCED ROLLING RESISTANCE. THE PROBLEM WITH “PNEUMATIC TIRES” IS THEY MAY GO FLAT FROM PUNCTURES, FOREIGN OBJECTS BECOMING STUCK AND CUTS. FLAT TIRES ARE A MAJOR INCONVENIENCE NO MATTER WHAT VEHICLE OR EQUIPMENT APPLICATION.

**FLAT PREVENTION IS A FINANCIAL DECISION THAT SHOULD BE DETERMINED BY YOUR EQUIPMENT APPLICATION, OPERATING CONDITIONS, WHERE YOUR EQUIPMENT IS USED AND LOADS AND SPEEDS.**

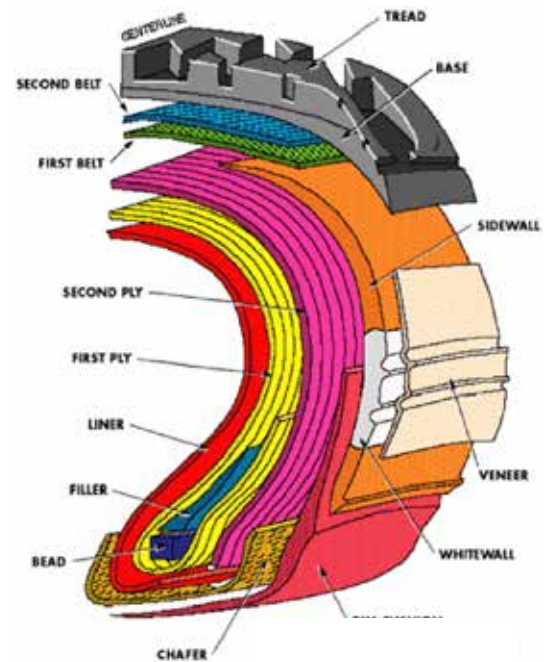
### THERE ARE SEVERAL METHODS OF FLAT PREVENTION FOR PNEUMATIC TIRES:

- TIRE SEALANTS
- POLYURETHANE FOAM FILLS
- SPECIAL RUBBER COMPOUNDS FOR TIRES
- TIRES WITH STEEL BELTS IN THE TREAD FACE
- BEAD LOCKS FOR SAFETY
- RUN-FLATS INSERTED IN THE TIRE
- CONTINUOUS TIRE INFLATION SYSTEMS (CTI)

### CONVENTIONAL NON-PNEUMATIC TIRES INCLUDE:

- SOLID TIRES THAT CAN BE PRESSED ON WHEELS
- STEEL WHEELS WITH MOLDED ON RUBBER TIRES
- AIRLESS AND SEMI-PNEUMATIC TIRES

**CONTACT A REPRESENTATIVE  
PREVENT FLATS FROM RUINING YOUR DAY!**



# FLAT PREVENTION OPTIONS FOR PNEUMATIC TIRES

## POLYURETHANE FOAM FILLED TIRES

OTR WHEEL ENGINEERING AND ITS ASSOCIATED DIVISIONS ARE RECOGNIZED AS THE LARGEST SUPPLIER OF FOAM FILLED TIRE/WHEEL ASSEMBLIES IN NORTH AMERICA BY VOLUME OF FOAM PUMPED ANNUALLY.

THE **POLYURETHANE FOAM FILL** PROCESS INVOLVES THE PRECISE MIXING OF TWO COMPONENTS AND PUMPING THE BLENDED POLYMER INTO TIRES THROUGH A HIGH PRESSURE PUMP.



FOAM FILL STATION



## POLYURETHANE TYRLYNER®

TYRLYNER IS A PERMANENT, SELF-HEALING URETHANE RUBBER SHEET THAT IS SECURELY ADHERED TO THE INSIDE OF THE TIRE CASING. TYRLYNER HEALS OVER CUTS, PUNCTURES AND PENETRATING OBJECTS, AND WILL PREVENT TIRES FROM GOING FLAT IF PUNCTURED OR CUT BY OBJECTS UP TO 1/4" IN DIAMETER.

TYRLYNER® IS A REGISTERED TRADEMARK OF ACCELLA



## AIRLESS AND SEMI-PNEUMATIC TIRES

AIRLESS AND SEMI-PNEUMATIC TIRES DO NOT RELY ON AN AIR CHAMBER TO INFLATE THE TIRE TO SUPPORT A LOAD.

## SOLID TIRES THAT CAN BE PRESSED ON TO WHEELS

SOLID TIRES OFFER SIGNIFICANT BENEFITS FOR THE RIGHT APPLICATIONS, PARTICULARLY WITHIN INDUSTRIAL SETTINGS. SEVERE JOBS REQUIRE A HEAVY-DUTY TIRE, AND SCHEDULES OFTEN DO NOT ALLOW FOR FLATS, REPAIRS AND REPLACEMENTS.



## STEEL WHEELS WITH MOLDED ON RUBBER TIRES

SUCH AS TIRES USED IN AERIAL WORK PLATFORM (AWP) APPLICATIONS.

## NEW TIRE PRODUCTS WITH ARAMID BELTS IN THE TREAD

CUSTOMIZE YOUR ORDER WITH AN ARAMID BELT TO ADD ADDITIONAL LIFE TO YOUR TIRES.



# TERMS OF PURCHASE, WARRANTY AND RETURNS POLICY

## TERMS OF PURCHASE

- SHIPPING CHARGES – ALL PRICES ARE F.O.B. OTR WHEEL ENGINEERING SHIPPING FACILITY UNLESS OTHERWISE NOTED. CUSTOMERS WILL BE NOTIFIED OF ANY EXTRA CHARGES FOR PACKAGING OF PRODUCTS FOR SHIPMENT.
- RETURNS – ALL PRODUCTS RETURNED REQUIRE PRIOR AUTHORIZATION AND ARE SUBJECT TO A RESTOCKING CHARGE.
- CUSTOM MADE PRODUCTS – CUSTOMERS ARE RESPONSIBLE FOR MERCHANDISE BUILT TO THEIR SPECIFICATIONS. SPECIAL PAYMENT TERMS ARE REQUIRED FOR CUSTOMER REQUESTED SPECIFICATIONS.
- DAMAGE AND SHORTAGE CLAIMS – ANY DAMAGE OR SHORTAGE MUST BE NOTED ON THE DELIVERY TICKET OR THE CARRIER'S FREIGHT BILL AT TIME OF DELIVERY.
- WARRANTY – WARRANTY CLAIMS WILL ONLY BE CONSIDERED ON ITEMS SOLD BY OTR WHEEL ENGINEERING.

## WARRANTY/RETURN POLICY

OTR WHEEL ENGINEERING, INC. HAS NO CONTROL OVER THE END USE OR APPLICATION OF ITS PRODUCTS. SHOULD SOMETHING GO WRONG WITH PARTS PURCHASED FROM OTR WHEEL ENGINEERING, INC. WITHIN A PERIOD OF ONE YEAR FROM THE DATE OF INVOICE, OTR WHEEL ENGINEERING, INC. WILL REPLACE OR REPAIR THE PARTS BASED ON SATISFACTORY PROOF OF DEFECTIVE WORKMANSHIP OR MATERIAL.

TIRES AND RUBBER TRACKS ARE SUBJECT TO THE FOLLOWING PREMATURE WEAR, PRORATED CREDIT, GUIDELINES:

**TIRES:** OTR WILL DIVIDE THE PURCHASE PRICE BY THE NUMBER OF MONTHS USED AND PROVIDE CREDIT IN A PRO-RATA BASIS OF THE NUMBER OF MONTHS OR REMAINING WARRANTY DIVIDED BY 12.

- A TIRE THAT FAILS IN THE FIRST MONTH IS POTENTIALLY ELIGIBLE FOR 11/12 CREDIT OR 92%.
- A TIRE THAT FAILS AFTER 6 MONTHS IS POTENTIALLY ELIGIBLE FOR 6/12 CREDIT OR 50%.
- A TIRE THAT FAILS IN THE 11 MONTH IS POTENTIALLY ELIGIBLE FOR 1/12 CREDIT OR 8%.

PREMATURE WEAR DOES NOT COVER INCIDENTS OF ABUSE AS STATED IN THE DISCLAIMER BELOW. THE CUSTOMER WILL BE GIVEN THE PERCENTAGE WARRANTY BASED ON WEAR FACTOR. SPECIFIC PICTURES OF THE DATE CODE, SERIAL NUMBER, AND PART NUMBER WILL BE REQUIRED AS PART OF THE REPLACEMENT REQUEST.

**RUBBER TRACKS:** CONTINUOUS RUBBER BELT TRACKS ARE COVERED AGAINST PREMATURE WEAR FOR A PERIOD OF ONE (1) YEAR OR 1,500 HOURS, WHICHEVER OCCURS FIRST FROM THE DATE OF INVOICE. ORIGINAL TREAD LIFE IS CONSIDERED COMPLETED WHEN THE TRACK HAS 10% OR LESS REMAINING TREAD IN ANY POSITION OF ITS ORIGINAL TREAD DEPTH, IN ANY PORTION OF ITS ORIGINAL TREAD DESIGN. A PRO-RATA BASIS, ACCORDING TO THE HOURS OF SERVICE PROVIDED IN THE APPLICATION AS FOLLOWS:

- 0 THRU 375 HOURS OR 0-3 MONTHS IS POTENTIALLY ELIGIBLE FOR 100% CREDIT.
- 376 THRU 750 HOURS OR 3-6 MONTHS IS POTENTIALLY ELIGIBLE FOR 75% CREDIT.
- 751 THRU 1,175 HOURS OR 6-9 MONTHS IS POTENTIALLY ELIGIBLE FOR 50% CREDIT.
- 1,176 THRU 1,500 HOURS OR 9-12 MONTHS IS POTENTIALLY ELIGIBLE FOR 25% CREDIT.

PREMATURE WEAR DOES NOT COVER INCIDENTS OF ABUSE AS STATED IN THE DISCLAIMER BELOW. THE CUSTOMER WILL BE GIVEN THE PERCENTAGE WARRANTY BASED ON WEAR FACTOR. UNDERCARRIAGE COMPONENTS MUST BE CHECKED BEFORE INSTALLATION OF ANY NEW RUBBER TRACKS TO BE CERTAIN THE COMPONENTS ARE WITHIN THE OEM SPECIFICATIONS AS WELL. UNDERCARRIAGES WITH MORE THAN 600 HOURS OF OPERATION SHOULD BE CHECKED BEFORE INSTALLATION. IF THE UNDERCARRIAGE HAS 1,000 OPERATING HOURS OR MORE, THE SPROCKETS AND IDLER WHEELS SHOULD BE REPLACED BEFORE THE INSTALLATION OF THE NEW RUBBER TRACKS. WORN UNDERCARRIAGES WILL CAUSE IMPROPER WEAR OF THE LINKS (INSERTED METAL PIECES) OF THE RUBBER TRACKS, AND WILL VOID THIS WARRANTY.

MAINTENANCE RECORDS WILL BE REQUESTED TO ENSURE THE SPROCKETS AND IDLER WHEELS HAVE BEEN INSPECTED AND REMOVED IF WORN AND DEFECTIVE.

SPECIFIC PICTURES OF THE DATE CODE, SERIAL NUMBER AND PART NUMBER WILL BE REQUIRED AS PART OF THE REPLACEMENT REQUEST.

**WHEELS:** PICTURES OF DEFECTIVE WHEELS ARE REQUIRED SINCE INCIDENTS OF ABUSE AS STATED IN THE DISCLAIMER BELOW ARE NOT WARRANTABLE. SERIAL NUMBERS, DATE CODE, JOB NUMBER, PART NUMBER ARE TO BE INCLUDED.

PARTS SHOULD NOT BE RETURNED TO THE FACILITY WITHOUT PRIOR APPROVAL OF OTR WHEEL ENGINEERING, INC. OTR WHEEL ENGINEERING, INC. WILL REIMBURSE FREIGHT CHARGES FOR PARTS SHIPPED TO ITS FACILITY IF:

- OTR WHEEL ENGINEERING, INC. HAS BEEN CALLED FOR AUTHORIZATION TO SHIP THE PARTS TO ITS FACILITY, AND
- THE PARTS ARE FOUND BY OTR WHEEL ENGINEERING, INC. TO BE DEFECTIVE.
- NO REPRESENTATIVE, DISTRIBUTOR OR DEALER HAS THE AUTHORITY TO MAKE ANY PROMISE, AGREEMENT OR ALTERATION TO THIS RETURN POLICY.
- 

## **DISCLAIMER**

OTR WHEEL ENGINEERING, INC. IS NOT RESPONSIBLE FOR ANY COSTS OF REPAIR ON THE MACHINE OR DOWNTIME DUE TO PRODUCT FAILURE. OTR WHEEL ENGINEERING, INC. IS NOT RESPONSIBLE FOR ANY LOST REVENUES DUE TO DOWNTIME BECAUSE OF PENDING WARRANTY ISSUE. OTR WHEEL ENGINEERING, INC.'S RESPONSIBILITY IS ONLY FOR THE PRODUCT AND ASSUMES NO RESPONSIBILITY FOR ANY DAMAGES TO EQUIPMENT AND/OR PROPERTY.

DUE TO THE WIDE VARIATION IN USES TO WHICH OTR WHEEL ENGINEERING PRODUCTS (WHEELS, HUBS, TIRES, ASSEMBLIES, ETC.) ARE SUBJECTED TO BY USERS, WE ARE UNABLE TO SPECIFY CARRYING CAPACITIES OR SPEEDS FOR A PARTICULAR APPLICATION: THEREFORE, THE MANUFACTURER MUST TEST HIS EQUIPMENT UNDER THE MOST SEVERE CONDITIONS TO DETERMINE THAT OTR WHEEL ENGINEERING PRODUCTS ARE SUITABLE.

ALL PRODUCTS SHOULD BE INSTALLED BASED ON OEM SERVICE MANUAL SPECIFICATIONS. ANY DAMAGE DONE TO OTR WHEEL ENGINEERING PRODUCTS NOT INSTALLED TO OEM SPECIFICATIONS WILL BE DEEMED THE



## WARRANTY

RESPONSIBILITY OF THE CUSTOMER AND WILL NOT BE COVERED UNDER THIS WARRANTY. IN ADDITION:

- FAILURES DUE TO OVERLOADING OR USE AS SPEEDS IN EXCESS OF THE MAXIMUM RECOMMENDED SPEED.
- TIRES THAT HAVE BEEN RUN UNDER INFLATED OR OVER INFLATED.
- USAGE OF THE PRODUCTS OUTSIDE OF NORMAL INTENDED USAGE WHICH EXCEED PUBLISHED TECHNICAL PERFORMANCE AND RATINGS SPECIFICATIONS.
- UNEVEN OR RAPID WEAR DUE TO MECHANICAL IRREGULARITY OF THE VEHICLE.
- DAMAGE RESULTING FROM FIRE, ACCIDENTS, CHEMICAL CORROSION OR VANDALISM.
- TIRES EXHIBITING FIELD OR ROAD HAZARDS INCLUDING CUTS, PUNCTURE, IMPACT BREAKS AND SUBTLE DAMAGE.
- SPROCKET AND IDLER WHEELS THAT HAVE MORE THAN 1,000 OPERATING HOURS. THE SEVEN ITEMS ABOVE WILL BE DEEMED THE RESPONSIBILITY OF THE CUSTOMER AND WILL NOT BE COVERED UNDER THIS WARRANTY.

## HOW TO FILE A CLAIM

IF YOU BELIEVE YOU HAVE A CLAIM FOR WARRANTY, CONTACT AN OTR WHEEL ENGINEERING CUSTOMER SERVICE REPRESENTATIVE TO RECEIVE A WARRANTY CLAIM FORM. COMPLETE THE CLAIM FORM IN ITS ENTIRETY. CLAIM FORMS NOT COMPLETED IN THEIR ENTIRETY WILL NOT BE CONSIDERED FOR WARRANTY.

PLEASE NOTE: THE REPLACEMENT PRODUCT WILL BE INVOICED AT THE REPLACEMENT BILLING PRICE. UPON APPROVAL OF THE WARRANTY CLAIM, A CREDIT MEMO WILL THEN BE ISSUED TO THE CUSTOMER FOR THE AMOUNT OF THE WARRANTY, UNLESS OTHERWISE SPECIFIED IN THIS WARRANTY STATEMENT.

## TERMS OF WARRANTY OR RETURN

- AUTHORIZATION – AN AUTHORIZATION NUMBER MUST BE OBTAINED BEFORE RETURNING ANY PRODUCT.
- HANDLING AND RESTOCKING CHARGES – A MINIMUM HANDLING AND RESTOCKING CHARGE OF 20% WILL BE CHARGED ON ALL RETURNED MERCHANDISE.
- RECONDITIONING – ANY RECONDITIONING COST WILL BE DEDUCTED FROM THE WARRANTY CREDIT.
- 1 YEAR LIMIT – ALL MERCHANDISE RETURNED FOR CREDIT MUST HAVE BEEN PURCHASED WITHIN ONE YEAR OF THE REQUEST FOR RETURN.
- SPECIAL MADE ITEMS – RETURN CREDIT FOR SPECIAL MADE PRODUCT WILL BE FOR MANUFACTURING DEFECT ONLY AND NOT FOR USE ISSUES.
- PROOF OF PURCHASE – ONLY ITEMS ORIGINALLY PURCHASED FROM OTR WHEEL ENGINEERING, INC. WILL BE CONSIDERED FOR RETURN.
- ACCOUNT CREDIT – ALL CREDITS WILL BE POSTED TO THE CUSTOMER'S ACCOUNT.
- PREPAID SHIPMENTS – ALL RETURNS THAT ARE RETURNED VIA COMMON CARRIER MUST BE PREPAID.

**FOR MORE WARRANTY INFORMATION: VISIT OUR WEBSITE [WWW.OTRWHEEL.COM](http://WWW.OTRWHEEL.COM).**





**TIRES AND WHEELS  
DESIGN AND DELIVERY SOLUTIONS**

**INTERNATIONAL HEADQUARTERS  
6 RIVERSIDE INDUSTRIAL PARK  
ROME, GA 30161  
800.833.6309  
OTRWHEEL.COM**